

Software Engineering Program

Presentation to the Board
Patrick Lam

December 10, 2019

Faculty of Engineering
Faculty of Mathematics



Part I

Succession Plan

Program Administration

2001 2002 2003 2004 2005 2006 2007 2008 2009 2010 2011 2012 2013 2014 2015 2016 2017 2018 2019 2020

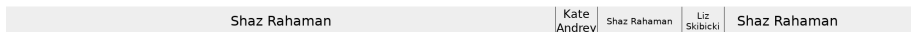
Director



Associate Director



Assistant to Director / Ugrad Advisor & Coordinator



Part II

Curriculum Committee Updates

Recent Past

- Removed one open elective (3 \rightarrow 2); accreditation visitor coincidentally encouraged us to remove requirements.
- Started to work on a first-year quantum physics course.
- Broadening the ATE list.

Part III

Student Survey Results

2019 Exit Survey (N=49): Expectations & Would Recommend

The on-campus portion of my engineering undergraduate program has met my expectations:

D = 0, d = 2, n = 6, a = 29, A = 13

The co-op portion of my engineering undergraduate program has met my expectations:

D = 1, d = 0, n = 0, a = 8, A = 41

I would recommend my program to other prospective students:

D = 0, d = 3, n = 7, a = 19, A = 21

Similar to 2018, though slightly less positive in general.

2019 Exit Survey: Cannot Program

Do you know of any classmates who cannot program (to a level that one would expect of an SE grad)? How many?

- 0: 32
- 1: 1
- 2: 2
- 5+: 3

2019 Exit Survey: Next Steps

In the year after graduation my next career step will be:

Full-time, SE	45
Other/unknown	2
Grad school (CS/ECE)	2
Grad school (other)	1

Do you plan to work on getting a professional engineering license in the next 5 years?

- Yes: 3
- No: 47

Social Connectedness Survey

Poll broadcast to students:

How many people have you had an in-person social conversation with for more than 15 minutes last week?

term	0-2	3-9	10+
1B	7 (15%)	14 (29%)	27 (56%)
3A	4 (10%)	29 (69%)	9 (21%)
4B	0 (0%)	18 (66%)	9 (33%)

Longer-term trends from W18, S18, F18, W19:

- 0-2: max of 21%
- 3-9: most responses here
- mean just below 10

Workload Survey

term	nominal load	contact hrs	total workload (hrs/week) (last year)
1A	5.5	28.25	55.9 (59.0)
1B	5.0	28	57.8 (51.5)
2A	6.0	27.25	55.0 (56.6)
2B	6.0	28	48.9 (53.9*)
3A	5.0	19.25	47.0 (39.5**)
3B	6.0	20.25	49.0 (43.5)
4A	5.0	17	36.2 (43.4)
4B	6.0	17	35.0 (47.6)

* load went from 6 to 5 courses; 3A will be 6

** exceptionally, there was no HW-based SE 350 lab in W18



Founding Presidents:
Bilal Akhtar (SE 2019) & Spencer Dobrik (SE 2020).
On-Stream President:
Roxane Fruytier (SE 2021).

Part IV

Space Update

Space Plan: Long-Term

SE admin space will move to DC 2523

(construction about to start)

SE undergrad lounge moved to EIT 3143/3146 (thanks ECE)

Part V

Admissions, Graduations, and Retention

Admissions Data

	2019	f %	2018	f %	2017	f %	2016	f %	2015	f %
Applications	1487	19	1555		1475	16	1340	17	1112	14
Offers	210	23	184	23	190	26	195	21	185	20
Confirmations	130	23	125	22	135	26	130	18	123	20
OSS avg	96.4		96.8		95.9		96.5		96.0	
OSS 10 th dec	94.2		95.0		93.2		94.3		92.5	

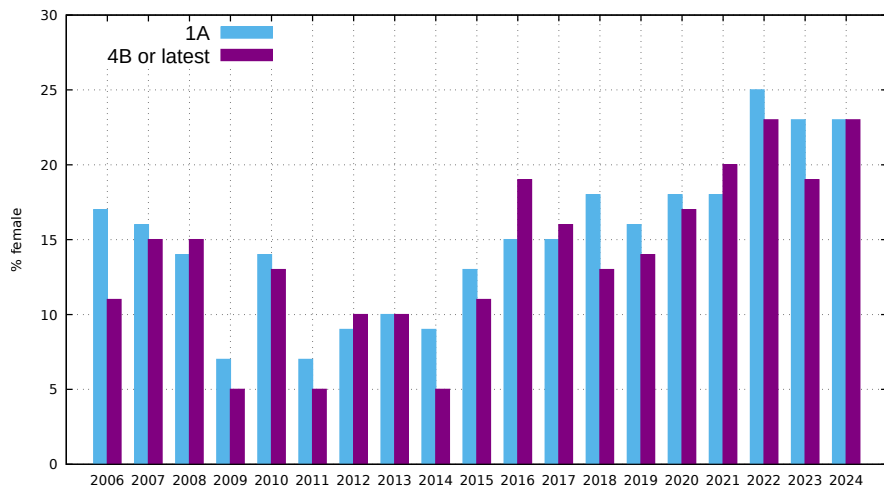
2019 & 2018 Applications

2019 applications:

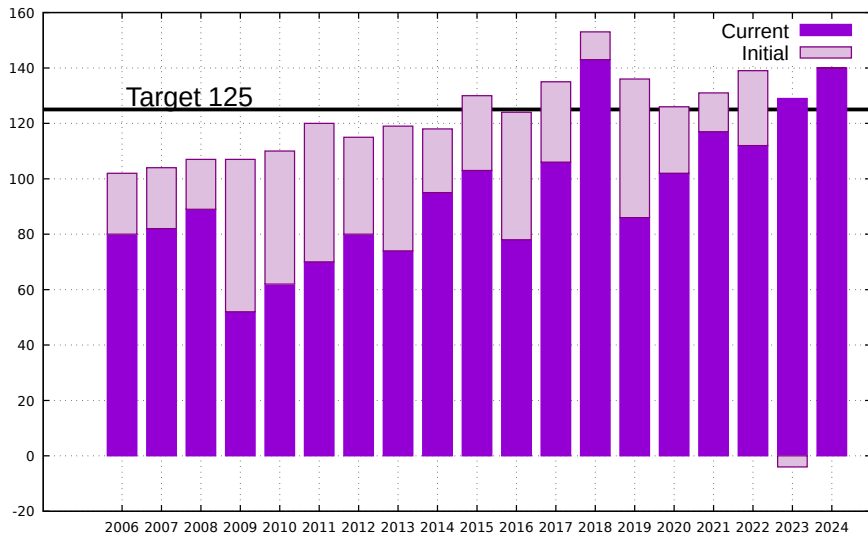
	apps	offers	confirms
Domestic	1062	173	115
Visa	425	37	15

Gender Counts

% female students in Software Engineering



Cohort Sizes



Graduation Rates

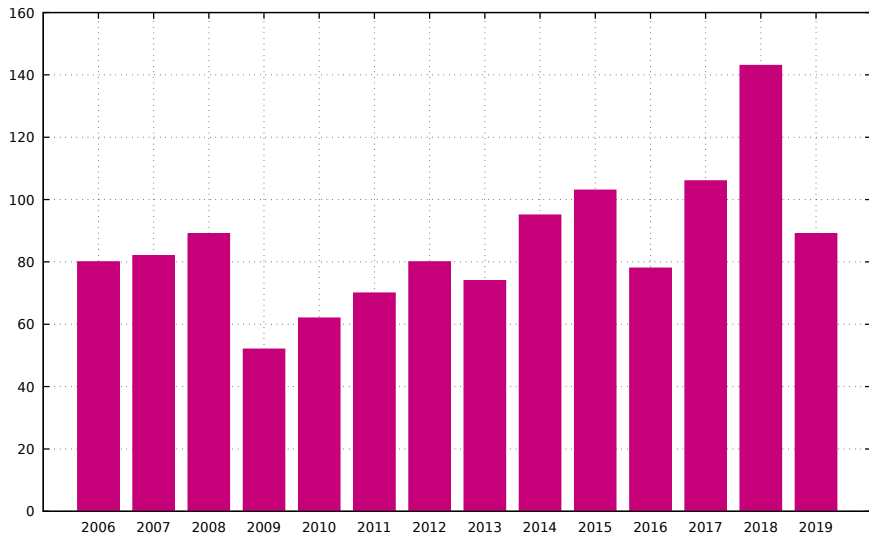
Tracking each of the students that initially enrolled in the BSE:

class of	# initial	% BSE	% BSE or BCS	% B.any
2014	115	65	77	82
2015	131	67	75	82
2016	122	63	71	75
2017	137	73	86	88
2018	151	81	89	90
2019	136	61	81	82

2019 BSE Graduates

- 89 students were granted BSEs in 2019.
- 91% of the 2019 graduates started with us in 2014.
- 7 students transferred into this class internally + 1 external.
- 2 students originally from SE 2018 (repeaters).

BSE Degrees Granted (total 2006–2019 = 1200)

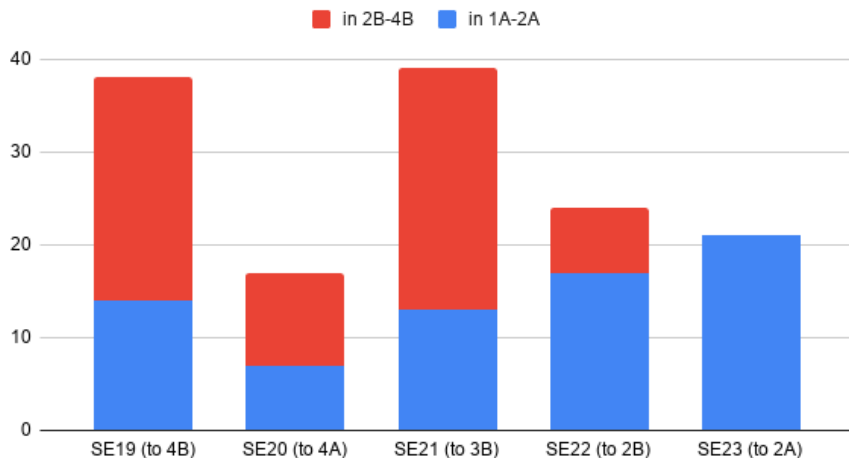


Part VI

Transfers

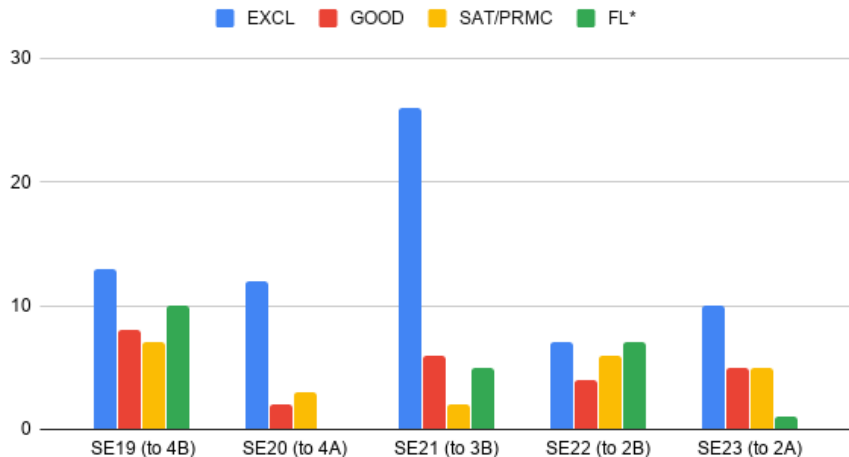
Transfer Counts

students transferred to CS



Transferred students: Last SE standing

Transferred students by last SE standing



Transferred students: Last SE term

Terms in which students transferred

